

The Comprehensive Water Quality and Climate Resiliency Portfolio (CWQCRP)

7/12/2022

Harnessing the Benefits of Nature



The Comprehensive Water Quality and Climate Resiliency Portfolio

A suite of restoration and conservation projects that...

- **Works together** synergistically and avoids one-off projects
- **Optimizes** resiliency benefits and leverages important habitat, water quality and GHG mitigation gains.
- Allows longer budgeting timeframes, beyond a one-year cycle, providing **fiscal certainty**
- Generates **new funding and financing opportunities** with other partners (MDOT, MDE, MEMA, DHCD, Army Corps, USFWS, NOAA, Private Sector. etc)
- Provides opportunity to better **integrate green and grey infrastructure** approaches.

Poised to take advantage of new federal funding initiatives!

Key WIP, GGRA and ARWG Strategy



“Having a pipeline of identified projects better prepares Maryland and its communities to build climate resilience by taking advantage of existing and emerging funding opportunities that promote the use of natural infrastructure”

- Maryland's Phase III Watershed Implementation Plan



WIP: [Maryland's Phase III Watershed Implementation Plan](#)

GGRA: [2030 Greenhouse Gas Emissions Reduction Act Plan](#)

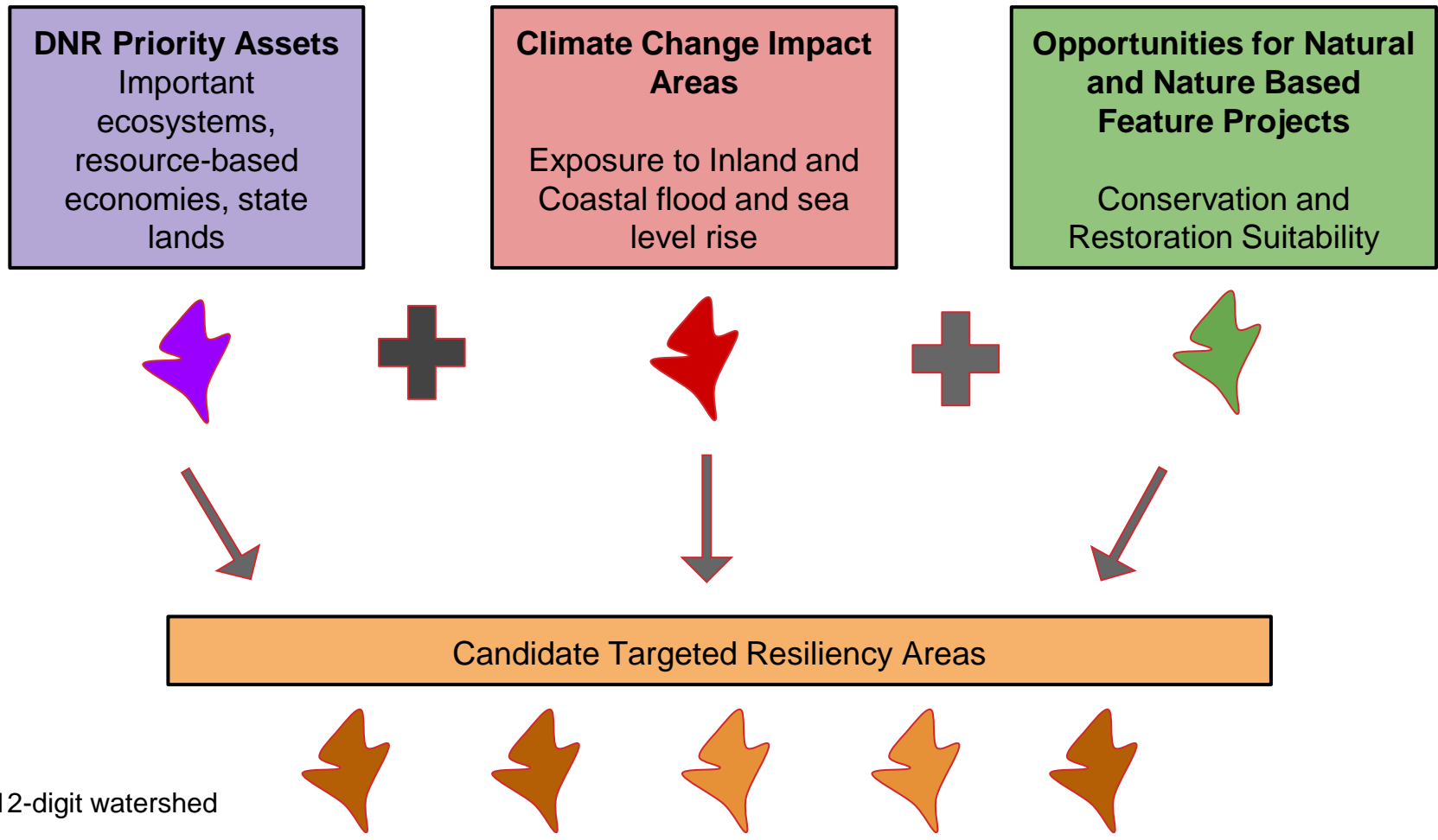
ARWG: [MCCC Adaptation and Resiliency Working Group 2021 Work Plan](#)

Building the Portfolio

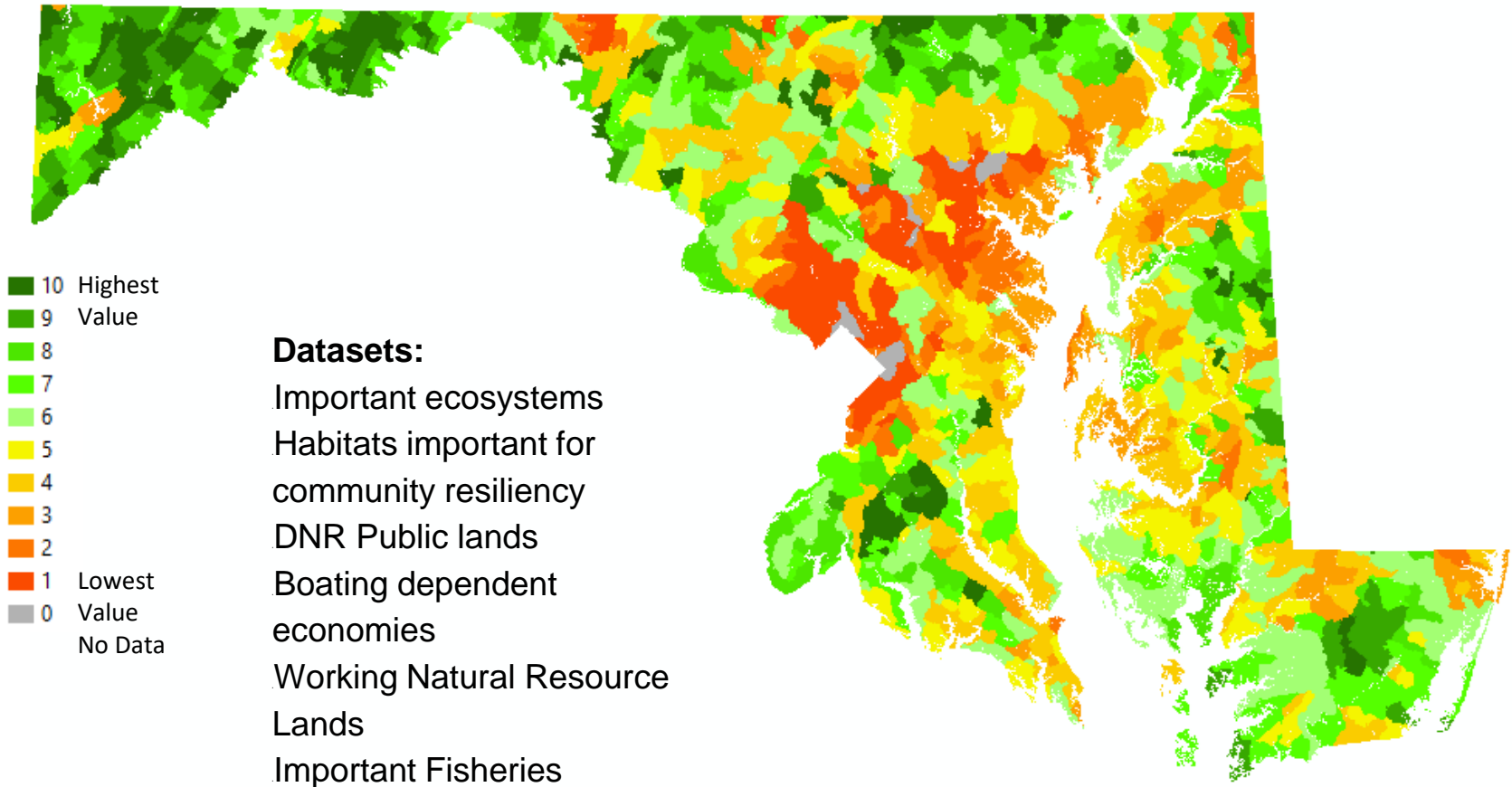


- Selection of 2 Targeted Resiliency Areas
 - Focus areas for action based on a landscape-scale, science-based targeted framework
 - Produces nature-based project portfolios that deliver multiple environmental, economic and societal benefits
 - Connects federal, state and local efforts to harness nature for risk reduction
 - Makes the best use of public investments

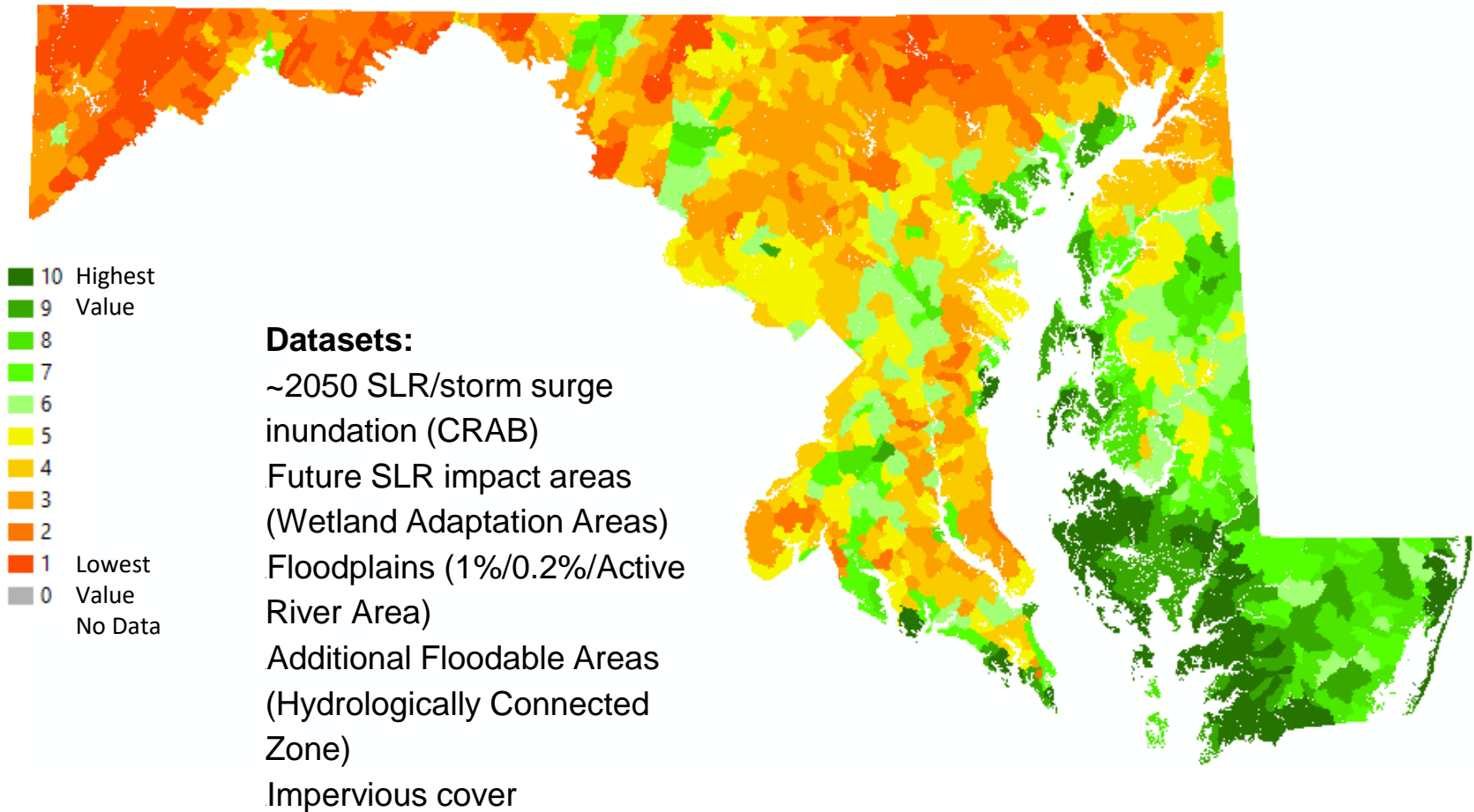
Identifying Targeted Resiliency Areas



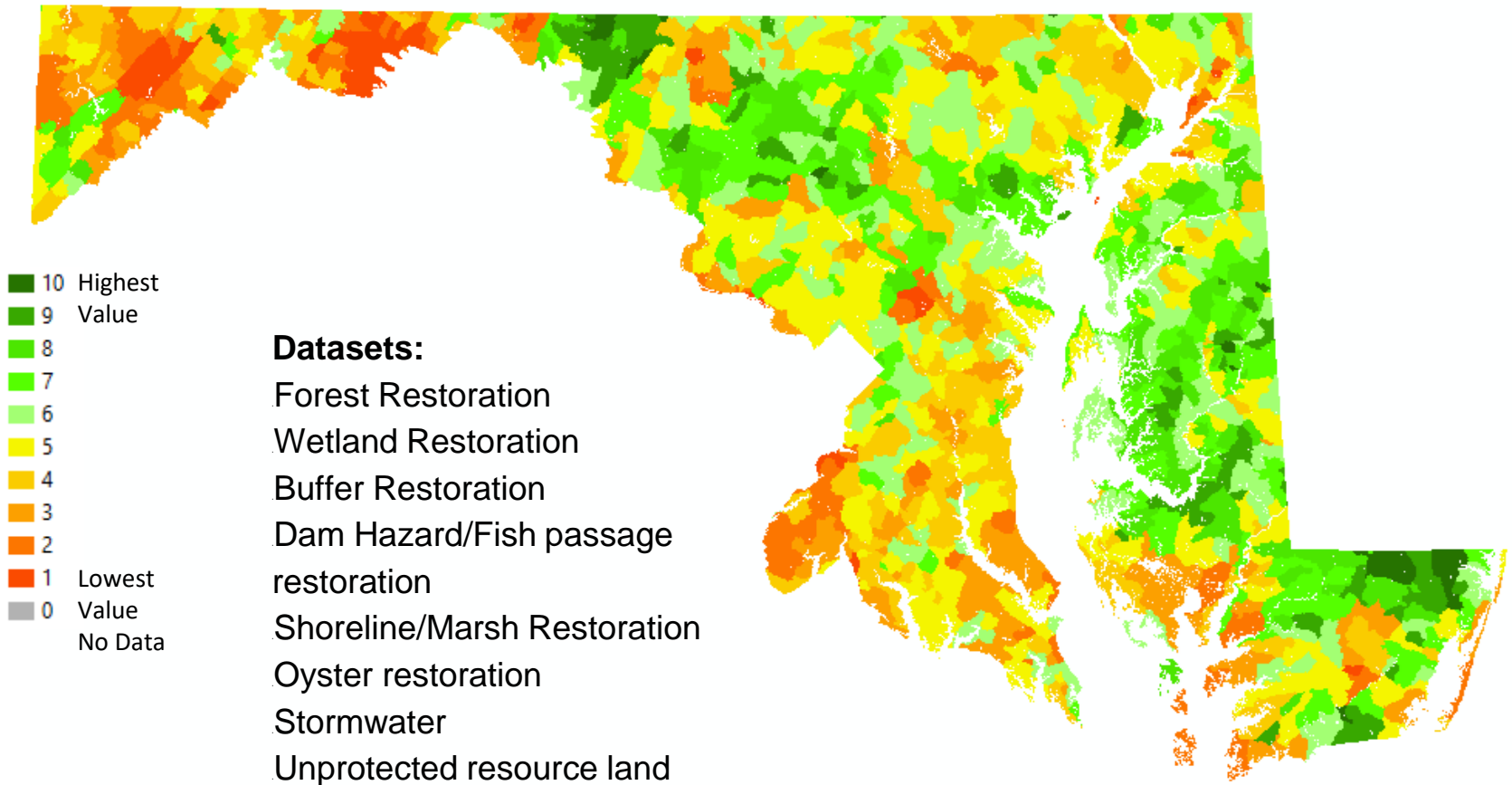
Pillar: DNR Priority Assets



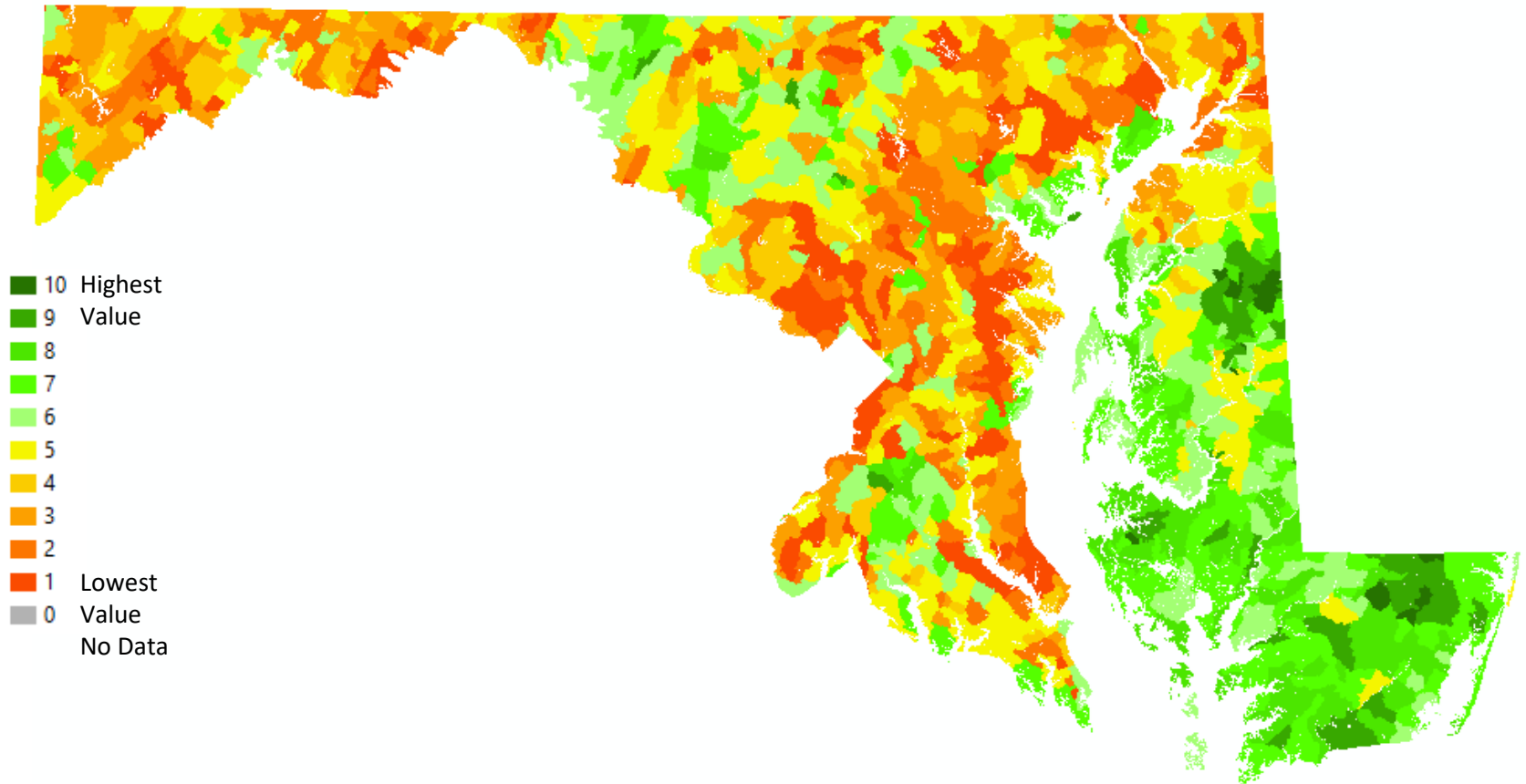
Pillar: Climate Change Impact Areas



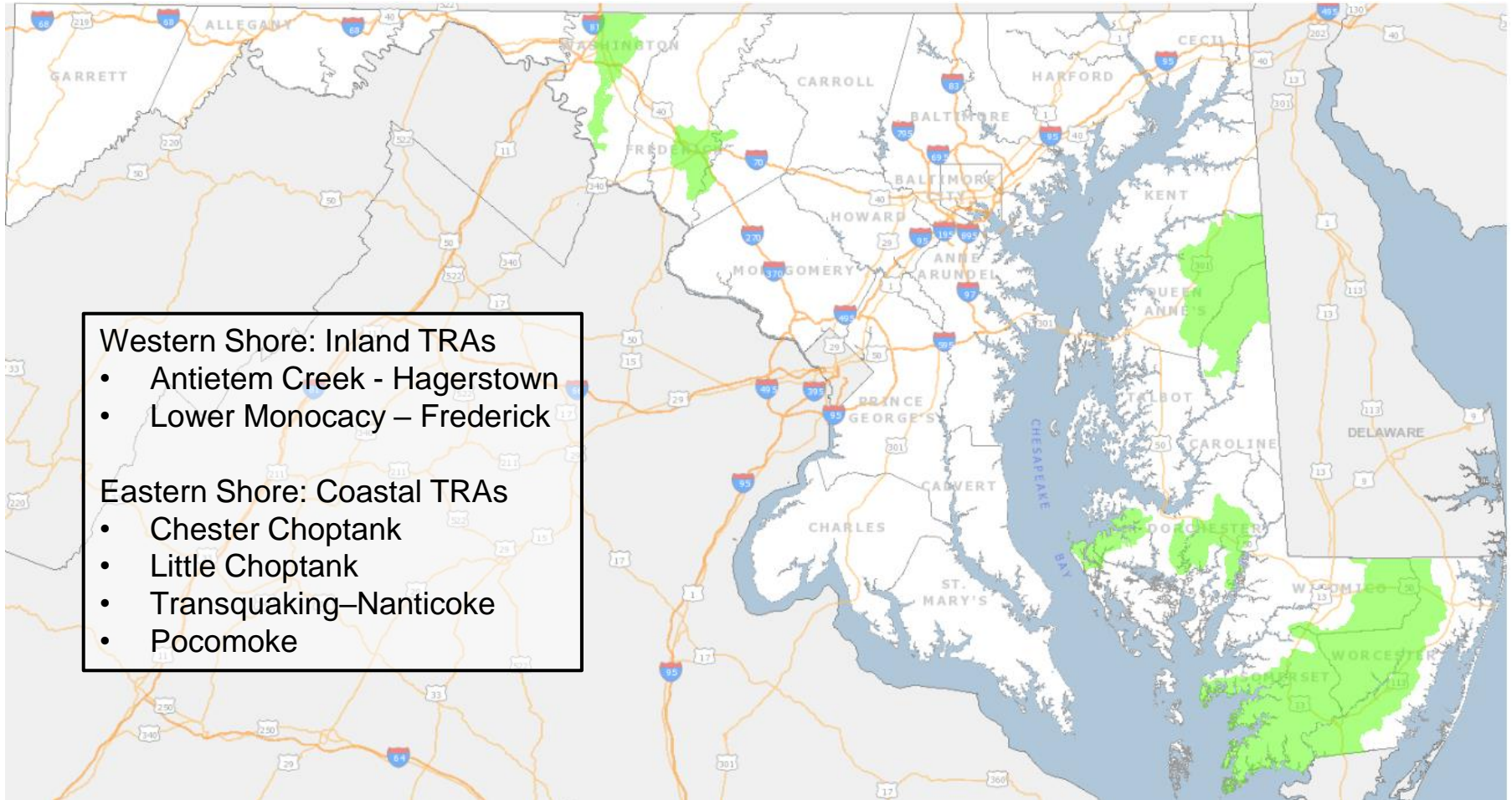
Pillar: Opportunities for Restoration and Conservation



All Pillars combined: GIS Assessment Results



Candidate Targeted Resiliency Areas (TRAs)



Larry Hogan
Governor

Boyd K. Rutherford
Lt. Governor

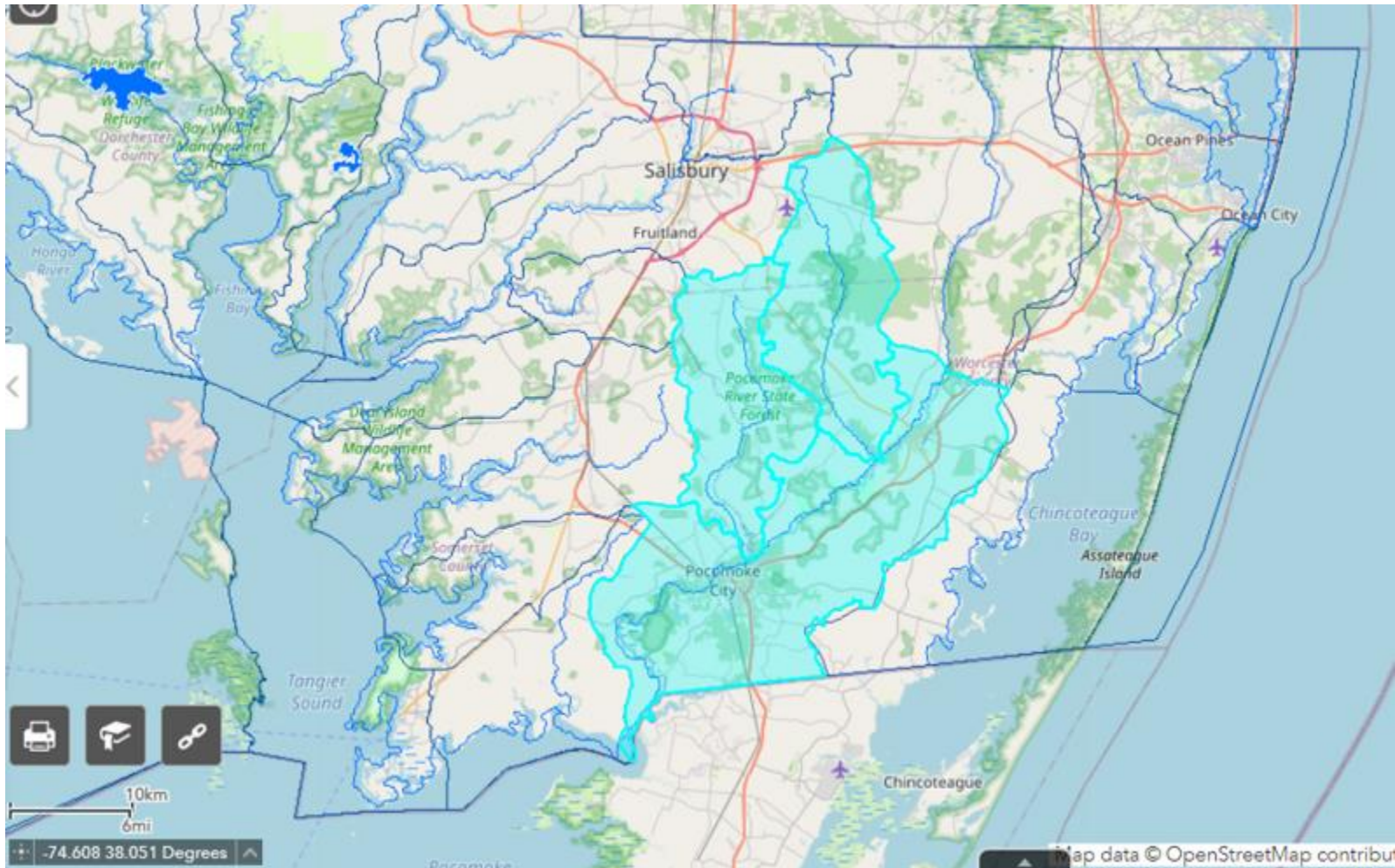
Jeannie Haddaway-Ricco
Secretary

Allan Fisher

Deputy Secretary



Pocomoke City and Drainage Area



Task 1



Refinement of Existing TRA Model

(est July 22 to March 23)

- Refine the study area based on local intel
- Update with local datasets, plans, priorities and other relevant work
 - Info collected from **Task 2**
- Produce a GIS-based restoration and conservation strategic plan for each TRA

Task 2



Community Engagement and Outreach

(est Sept 22 to February 23)

- Select local communities at risk/underserved/lacking capacity/DEIJ
- Identify local trusted liaison for community engagement
- Identifying and reaching out to all potential interested partners
- 3 in person/virtual meetings with selected communities
- Collecting sources of local data
- Determining local level assets and critical infrastructure that are being impacted

Task 2 Continued



Community Engagement and Outreach

- Identifying potential projects for the portfolio
 - **priority projects in other plans**
 - **vulnerability assessments with projects for risk reduction**
 - **Cost/benefit assessments for each project**
 - planning, design and implementation costs
 - resiliency, water quality, carbon mitigation and habitat benefits
 - **unawarded grant projects** that were previously applied for by the community of interest

Task 3



Site Assessment and Feasibility Analysis

(December 22 to April 23)

- Potential projects will be assessed and prioritized
- Feasibility study conducted for selected projects
- High priority projects moved forward to concept design (fundable!)
- Remaining projects reserved for portfolio (future funding)

Task 4



Concept Design of Projects

(est. January 23 to May 23)

- Under guidance of professional engineer
- Ready for funding!

Task 5



Portfolio Narrative Development

(est February 23 to June 23)

- Appropriate for distribution to funding agencies, partners, public, etc
- Identifies the “project portfolios”
- Cost/benefits and project sequencing
- Funding strategies
 - Funding sources, partnerships, capacity-building, etc

Local Government Partner Expectations



- Help refine study area boundary
- Identify at-risk underserved communities and trusted local liaison
- Connect the team with local partners/interests
- Provide contractors with needed information
- Participate in community meetings
- Optional participation in regular steering committee meetings